

NAFA 2023 ARTIST INFO





Townsville City Council acknowledges the Wulgurukaba of Gurambilbarra and Yunbenun, Bindal, Gugu Badhun and Nywaigi as the Traditional Owners of this land. We pay our respects to their cultures, their ancestors and their Elders, past and present - and all future generations.



NAFA 2023

FRI 23 JUNE – SUN 9 JULY

Festival Hub, Strand Park



WHAT IS NAFA?



NAFA is a hybrid curated and Fringe arts and cultural festival and a two time Australian Event Award winner! This month long celebration of arts has become a signature event in Townsville for the community to enjoy a showcasing talents across music, dance, theatre, comedy, exhibitions, visual arts and much more!

In the spirit of Fringe Festivals across the globe – NAFA has an inclusive, organic and open access side that features all forms of art and performance. ‘Open access’ means that unlike most arts festivals, no one is in charge of deciding which shows get to take part.



NAFA 2022 Snapshot

- 52,259 people attended
- 105 shows
- 427 individual performances
- 125 free events
- 1,456 artists involved

ARTFORM

40%

Music

37%

Cabaret and Comedy

29%

Circus and
Physical Theatre

20%

Dance

14%

Theatre

6%

Workshops

6%

Visual Arts

6%

Interactive



Participating in NAFA 2023



HOW CAN I BE INVOLVED?

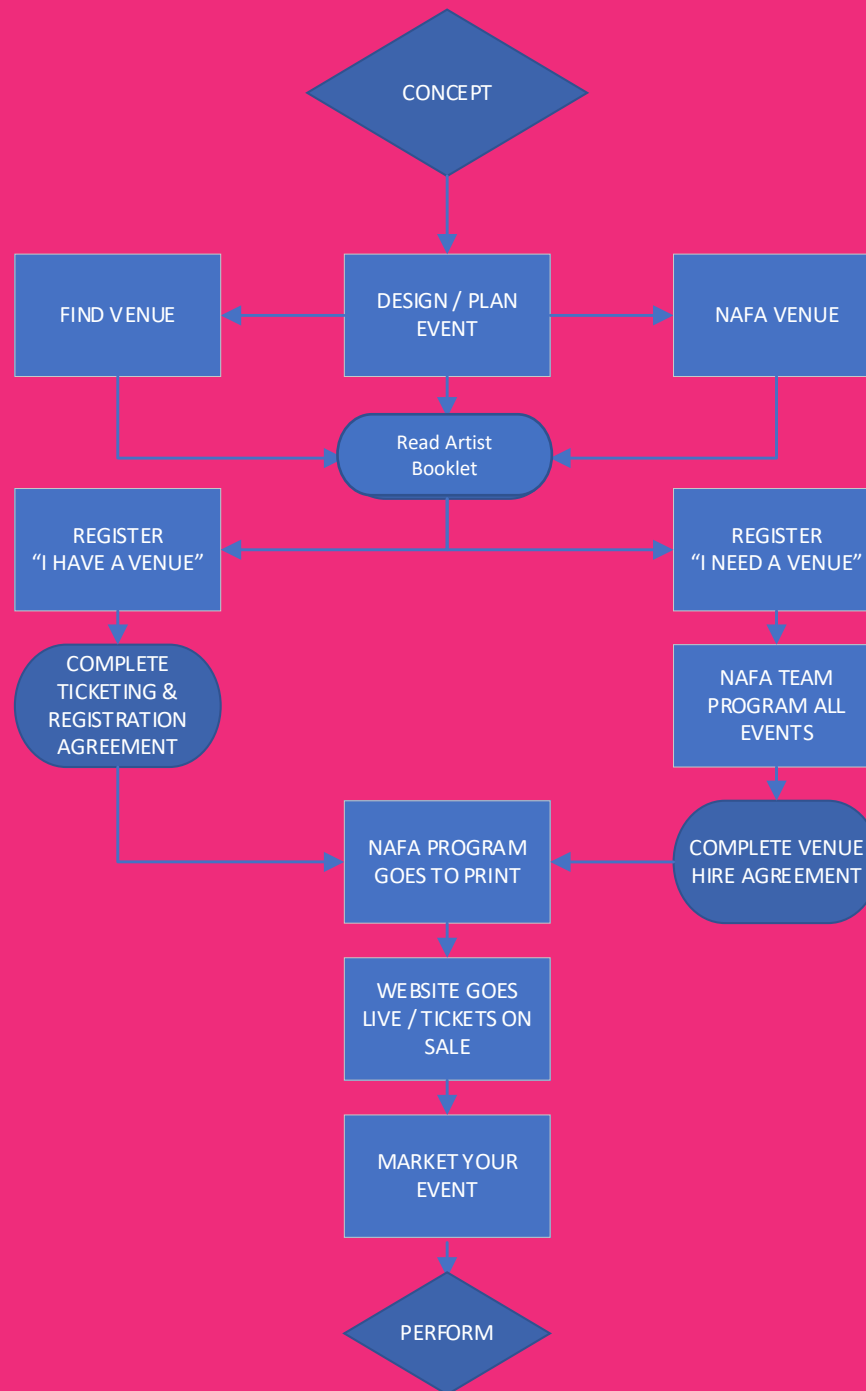


There are many different ways you can take part in NAFA!

Some options are:

- **Artist** – Come and show off your talents!
- **Venue** – Do you want to connect with artists and offer your space for their performance or works?
- **Staff** – Each year we are always looking for people to help us out! Roles include Site Supervisors, Venue Managers, Front of House Officers, Box Office Staff.
- **Volunteer** - Our volunteers help with a range of things during the festival. You can volunteer as much or as little as you like!
- **Vendor** – Are you a food vendor or stall holder looking for a place to set up? Come share your goodies at our Festival Hub.
- **Sponsor** – NAFA offers an array of opportunities for our partners to showcase their bands and help us deliver initiatives that enrich the lives of our community.





Artist Registration Process

KEY DATES



- Artist Registrations Open 23 January 2023
- Fringe Hub Artist Registrations Close 5 March 2023
- Community Fringe Artist Registrations Close 19 March 2023
- Marketing Deadline 19 March 2023 *
- Tickets On Sale 5 May 2023
- Festival Opening Night 23 June 2023
- Festival Closing Night 9 July 2023

*Any changes to performance descriptions or images will not be accepted after this date – subject to change

WHAT NAFA DOES FOR YOU



TICKETING

- The NAFA Team will setup your ticketing through the NAFA website.
- The NAFA Team will facilitate the sale of your tickets from on sale until show time!
- You will receive weekly sales reports.

SUPPORT

Do you have questions? Unsure of how something works? The NAFA Team is here to help and support you every step of the way. Contact the team and we will assist you as soon as possible.

MARKETING

You will receive the following as part of your registration:

- Event listing on NAFA website.
- Standard listing in program.
- We will share your reels and stories on Social Media, so make sure you tag us @nafa_tsv!

The 7 Deadly Sins
Presented by Laura Shum

Rating **M15+ - MATURE AUDIENCES**
Duration **90 MINUTES**
Venue **NAFA SPIEGELTENT**

Description
This group of Townsville performers come from several different movement backgrounds including taekwondo, gymnastics, cheerleading, bodybuilding, and pole dance.
They all found circus along their personal journeys and have come together as a group to show what kind of talent we have right here in North Queensland. Led by Canadian aerial artist Laura Shum, The 7 Deadly Sins made their debut at the 2021 Townsville Fringe Festival.
The group returns this year hoping to put on an even bigger and more spectacular performance. Throughout the year, you can catch the sins performing at various local community and corporate events such as Townsville Eats, charity balls, and with Circus Pandemonium.
The 7 Deadly Sins return after a timeout in Pandora's Box. Let these wicked vices - Pride, Greed, Wrath, Envy, Lust, Sloth, and Gluttony - be unleashed as they entice you to join the dark side. Brought to you by a group of talented Townsville performers who will astonish you with their flips, spins, and drops. An exhilarating spectacle featuring astounding acrobatics, breathtaking aerial arts, dauntless fire dancing, and magical manipulation. Get ready to be astonished, captivated, and seduced.

Warning: Adult Themes, Smoke Effects, Fire, Flashing Lights, Coarse language

Instagram **Facebook** **Website**

Ticket Prices

General Admission	\$45
Concession/Student	\$40
Group 5 - \$40 each	
Group 8 - \$40 each	

The 7 Deadly Sins (M15+)
NAFA Spiegeltent, Festival Hub, Jazzline Barracks QLD 4810

Category
Circus

Dates & Times

Friday 1 July	6:00pm - 7:00pm
Saturday 2 July	5:00pm - 6:00pm
Sunday 3 July	6:00pm - 7:00pm

MERRY-GO-ROUND
Cootharinga

THE MAY WIRTH

1 JUL | 5:30PM | 80min

Join us for a discovery of dance expression, unique storytelling and circus fun, at MERRY-GO-ROUND.

Share in the creative learning of a live workshop, as local performers with disability explore physical storytelling and collaborative expression. Led by some of Queensland's leading arts professionals from Casus Creations, Dancenorth, and Circus Pandemonium, MERRY-GO-ROUND is the final showcase of skills learned during the four-day intensive dance and circus skills program.

At the conclusion of the showcase, audience members are invited to partake in a Q&A session with selected artists and program facilitators.

MERRY-GO-ROUND is presented by Cootharinga, in partnership with Access Arts. MERRY-GO-ROUND has received financial assistance from the Queensland Government through the Queensland Backing Indigenous Arts initiative.

TICKETING



In 2023, all performances and events will be ticketed through the NAFA website. If a venue has a contract with a ticketing provider in place already, this must be discussed with the Festival.

TICKETING FEES & CHARGES

5% + \$0.50 per ticket	This includes your event creation fee, administration charges and booking fee costs. This is applicable to all tickets, including your Complimentary Tickets.
\$2 per ticket – for cancellations	Please be advised, this fee will be applicable for any cancellations other than COVID related.

TICKET SETTLEMENT

The NAFA team will email your Box Office Report (BOR) between 7-14 days after your event concludes. This timeframe is to ensure any cancellations, refunds and charges are accurately recorded.

The payment of your Net Box Office amount will be transferred into your nominated bank account within 30 days of your event.



PUBLIC LIABILITY INSURANCE



NAFA requires all performances to have Public Liability Insurance.

Public Liability Insurance (PLI) covers any incidents or claims made by members of the public e.g., injuries, loss/theft or damage to property etc.

Events held on council-controlled land or in a council-controlled venue requires event organisers to hold a **minimum of \$20 million in Public Liability Insurance.**

A copy of the Insurance Currency Certificate will need to be provided to the festival prior to the event.



GRANTS



Each year there are many grants available at all levels of government, Federal, State and Local. Other grants may also be available from local businesses and community organisations. Grants are available to artists and arts organisations to assist in producing a performance, event, or art piece.

Most grants can be access through the 'Smarty Grants' portal or can be found online.

If you have any questions or need assistance applying for a grant you can contact the Townsville City Council Grants and Partnerships Team.



MARKETING



ADDITIONAL PROGRAM ADVERTISING

If you would like to purchase additional space in the NAFA Program, this can be a great avenue. With over 10,000 printed programs distributed, and the online program viewed 11,180 in 2022, this is great additional exposure.

Description	Size of Advert / Specifications	Price
Strip Ad	187mm (w) x 69.5mm (h)	\$250
Third Page	60mm (w) x 278mm (h)	\$350
Half Page	187mm (w) x 139mm (h)	\$450
Full Page	210mm (w) x 297mm (h) +3mm bleed	\$600



KEY CHANGES IN 2023



Fees & Charges

As part of NAFA 2023, there will be administration fee's and charges applied to any changes to your event from the **18th March 2023 (Marketing Deadline)**. Before this, any changes will not be charged. Any charges incurred will be taken from your Net Box Office Amount at settlement.

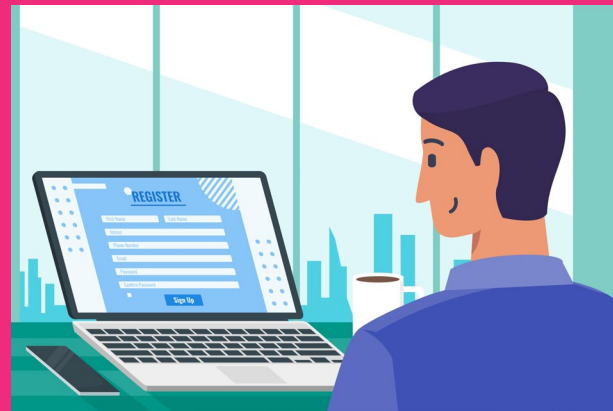
- **Event Change - \$20**
 - Changing of dates, times, ticket categories or cancellation of event will incur this fee
 - Once the changes have been actioned, any further changes in the future will incur this fee again.
- **Cancellation within 48hours - \$50**
 - If your event is postponed or cancelled, we require 48 hours notice before the scheduled start time.
 - Less than 48 hours notice will incur this additional fee to cover administration costs.
 - The above \$20 Event Change charge will not be applicable in this instance.
 - If you have multiple events, this charge is only applied once. However, if you only cancel one event, then cancel another event at a later date/time, this charge will apply again.

REGISTER!



When registering your show to be part of NAFA, ensure you have everything ready. Certain fields are mandatory to complete your registration.

- Head to nafa-tsv.com.au to REGISTER
- There are 3 options when you register
 1. **I have a venue** – this form is for those who have booked their own venue
 2. **I need a Venue** – this form is for those who want to be considered for one of the Fringe Hub Venues
 3. **I am a Venue** – this form is for venues that would like to host Fringe artists. It can be any type of venue, and your information will be displayed on our website for artists to contact you



FRINGE HUB VENUES



NAFA will host performances in pop-up venues located inside our Festival Huub at Strand Park.

To perform in a Fringe Hub Venue:

- Your show must not exceed the **1 hour time slot** (excluding bump in and bump out)
- There is no set venue hire fee, instead NAFA facilitates a **70 – 30% Box Office Split**.
 - 70% goes the artist
 - 30% of gross ticket sales goes to the festival to cover venue hire, equipment hire, staffing etc.
- There are very limited spots this year, so if you don't get a spot, don't stress! You can still register using your own venue.



NAFA SPIEGELTENT



The NAFA Spiegeltent is a unique venue, with 'Spiegeltent' being Dutch for mirror tent. With this historic European setting which comes complete with stained glass windows and mirrors, it is an exciting venue to host your event.

CAPACITY

380 maximum

STAGE DIMENSIONS

- 2.4m at the front x 5.7m
- 5m round stage (needed for ariels)

VENUE DETAILS

- People with Disability (PWD) accessible
- Combination of booths and single chairs
- Some seats will have slight obstructed view
- Aerials available upon negotiation



THE EMPIRE THEATRE

The Empire Theatre is a slightly more intimate venue still with the ability for aerals.

CAPACITY

150 maximum

STAGE DIMENSIONS

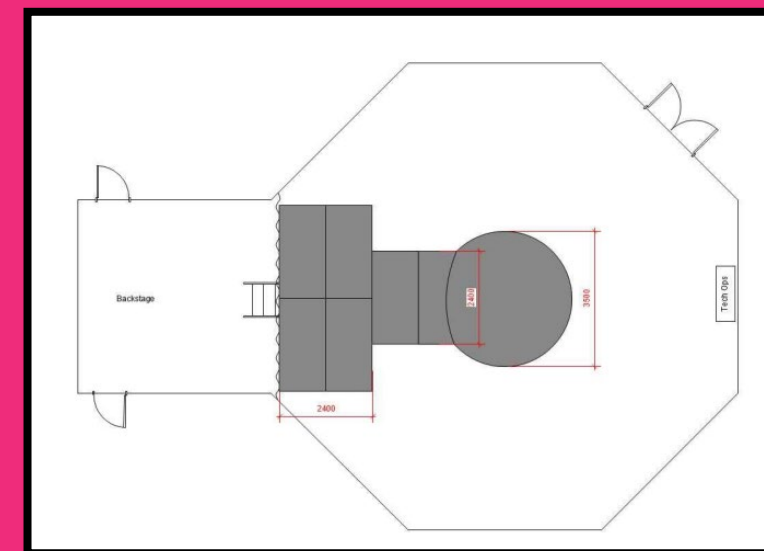
- 4.8m wide x 2.4m deep

And/or

- 3.5m diameter circle stage under ariel point connected back to main stage (may change to square of similar size or bigger)

VENUE DETAILS

- People with Disability (PWD) accessible
- Seating will be straight on at ground level
- Aerials available upon negotiations



PINOCCHI'S PALACE



Designed with our mascot Pinocchi in mind, this intimate tent is perfect for a smaller crowd.

CAPACITY

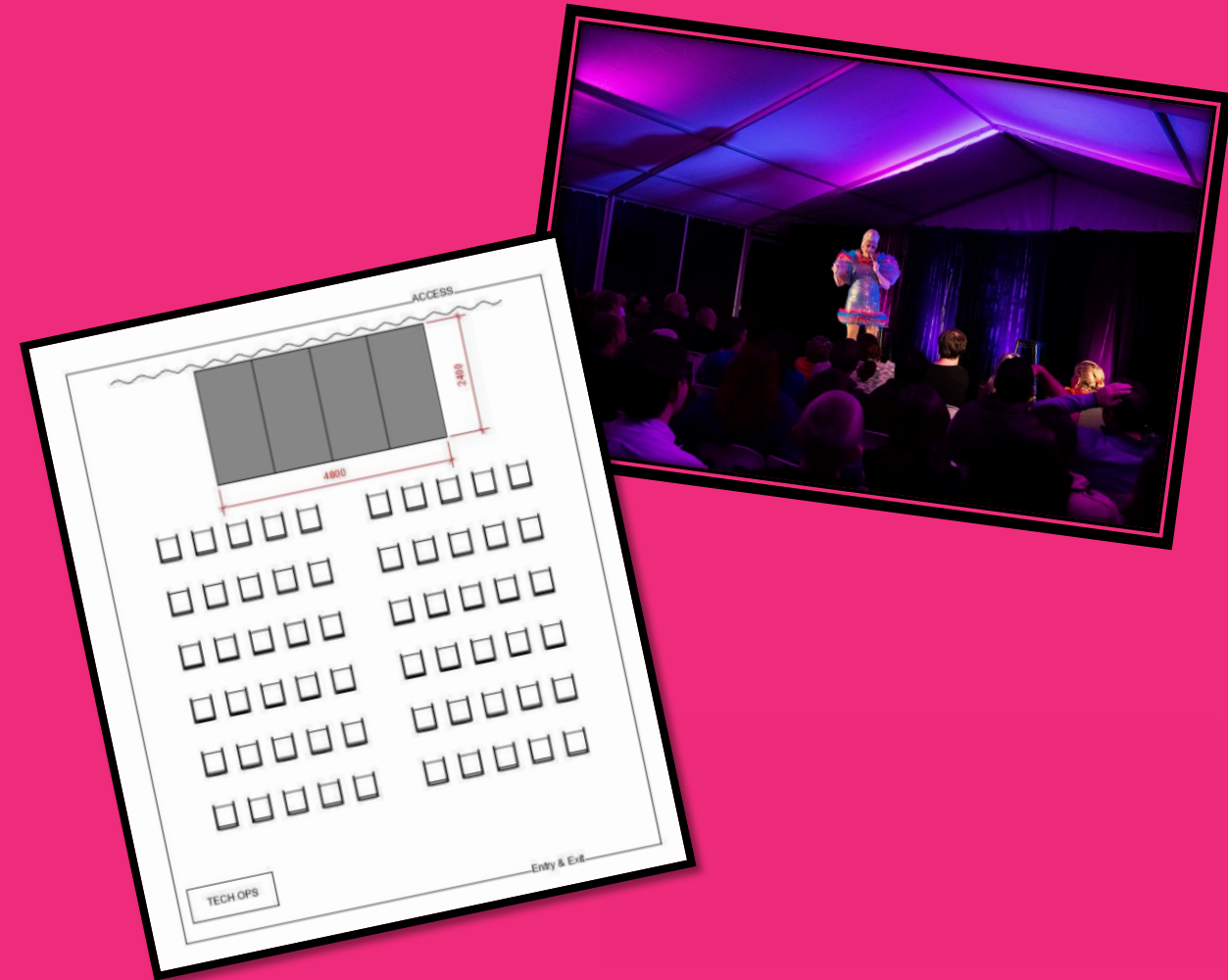
80 maximum

STAGE DIMENSIONS

4.8m x 2.4m

VENUE DETAILS

- People with Disability (PWD) accessible
- Seating will be straight on at ground level



ARTIST INFORMATION BOOK

We have compiled all the helpful tips and tricks of organising a Fringe event into one handy *Artist Information Book*.

Head to nafa-tsv.com.au to check it out!



WHERE TO NEXT?



Have you thought of taking your event national, or even international?

Fringe Festivals are a worldwide phenomenon and are held in a circuit for artists and patrons to enjoy year-round. The below are just some of the stops you could make!

Festival	Dates	Notes
Fringe World, Perth	20 Jan – 19 Feb 2023	4 th biggest Fringe Festival in the world
NZ Fringe Arts Festival, Wellington	17 Feb – 11 Mar 2023	
Adelaide Fringe	17 Feb – 19 Mar 2023	2 nd biggest Fringe Festival in the world
Newcastle Fringe	9 Mar – 19 Mar 2023	
NAFA, Townsville	23 Jun – 9 Jul 2023	THIS IS YOU!
Darwin Fringe	15 Jul – 23 Jul 2023	
Edinburgh Fringe, Scotland	7 Aug – 31 Aug 2023	BIGGEST Fringe Festival in the world
Sydney Fringe	1 Sept – 31 Sept 2023	
Melbourne Fringe	5 Oct – 22 Oct 2023	

CONTACT US



For all enquiries for the North Australian Festival of Arts please contact the team via the channels below.

Please note we are a small team working across 400 shows, so please be patient while we get back to you as soon as possible.



(07) 4417 5127

nafa@townsville.qld.gov.au



